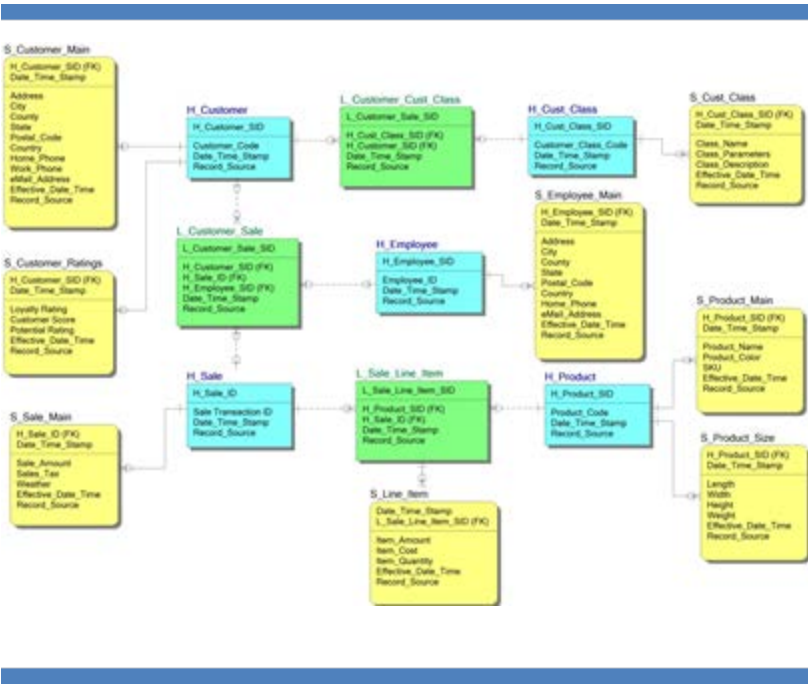


DATA VAULT CDVDM

Certified Data Vault Data Modeler Course



DATA VAULT CDVDM

Certified Data Vault Data Modeler Course

Forward

Thank you for your interest in the Data Vault certification course. Your successful completion of this course will result in a designation of Certified Data Vault Data Modeler – CDVDM.

Data Vault modeling is rapidly becoming the standard modeling approach for the data warehouse. Over 1200 major international organizations are applying data vault modeling techniques today.

The data vault principles are specifically well suited for data integration and historization. When applied to data warehousing programs data vault modeling can provide the organization with some very compelling benefits. These include agility, auditability, adaptability, alignment with the business, and support for operational data warehousing initiatives.

To gain these benefits the organization will need to commit to both EDW program level factors as well as specific data vault modeling patterns, standards and methods. This course will guide you through these modeling patterns, rules and methods to prepare you for successful data vault modeling in your organization.

We look forward to seeing you in the classroom.

The CDVDM Course

Welcome to the Certified Data Vault Data Modeler - CDVDM seminar! This course will guide you through the Data Vault modeling approach from modeling constructs and patterns to applying data vault principles in your DWBI program. This course also covers loading paradigms, architectures, and how to develop an effective overall data vault data warehouse program. Since data vault may be new for many of you, this course also includes a summary of the benefits of using data vault techniques.

CDVDM Course Structure

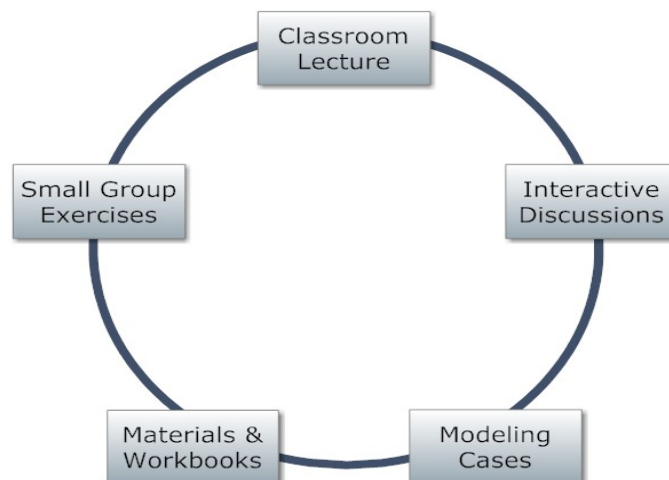
This course leverages the latest in optimized learning techniques. Based on a blended delivery model, students begin two (2) weeks prior to class with a set of online, on-demand video lessons. Then students come together for two (2) days in the classroom. The CDVDM certification exam is administered in the classroom during the afternoon of the second day.

The on-demand video lessons include filmed lectures, white board sessions & presentations. There are dozens of studio filmed video lessons covering key topics in Data Vault modeling. Videos stream 24/7 from www.DataVaultAcademy.com and samples can be viewed [here](#).

The 2 days classroom time component is structured and highly interactive including:

40% Classroom Lecture, 30% Small Group Exercises and 30% Interactive Discussions.

The classroom course consists of five core components plus the certification exam. These include the lectures, exercises, discussions as well as materials & workbooks and the modeling cases.



The course materials consist of a published course book that follows the classroom lectures and several modeling cases for the small group modeling labs. Class interactive discussions are based on these cases plus workbook examples.

Target Audience

The target audience for this course includes data warehousing and business intelligence professionals, data modelers, data architects, model managers, data warehouse DBAs, data scientists, and ETL professionals. Because data vault modeling concepts are closely aligned with the business aspects of DWBI programs our target audience also includes program managers, business analysts, information modelers, information architects, and other BICC professionals.

Course Outline

Day One

0830 Welcome & Introductions
0900 Data Vault Fundamentals
0920 Business Justification: DV Benefits
0930 Ensemble Modeling for the DW
0940 Unified Decomposition
0950 Comparing 3NF, Dimensional & DV
1005 Data Vault Modeling Process
1015 Core Constructs: Hub, Link, Satellite
1030 Break
1045 Case 1 Small Group Exercise
1145 Presentations & Discussion
1215 Lunch
1300 Core Business Concepts & Bus Key
1315 Methodology & DW Industry
1325 Fundamental Architecture
1335 Concept Integration RAW vs BDV
1345 Error Marts & DWBI Feedback Loop
1350 Architectural Layers & Persistence
1400 SAL/HAL, Codes & Reference Tables
1415 Case 2 Small Group Exercise
1500 Break
1515 Complete Case 2 Exercise
1530 Presentations & Discussion
1600 Link versus Hub Bike Shop Scenario
1620 Unit of Work (UOW)
1640 End of Day One: Q&A
1655 Assign Case 3 Exercise
0500 Wrap up for the Day

Day Two

0830 Coffee & Discuss Day One
0900 Case 3 Small Group Exercise
1030 Break
1045 Presentations & Discussion
1115 Satellite Design & Address
1145 Common & Mandatory Attributes
1200 Lunch
1300 Data Vault Loading Paradigm
1320 Sourcing Data from the DV DW
1330 PIT & Bridge Tables
1340 SID versus Hash & Virtualization
1350 Wrap Up & Exam Prep
1400 Certification Exam
1515 Break
1530 Continue Certification Exam
1700 Collect Exams
1700 Class Completed



Requirements and Pre-Requisites

This course does not require a computer or other device. Students should be prepared to take notes. All materials, work books, case books and exercises will be provided.

There are no pre-requisites for this course. It is helpful if you bring any specific topics that you are interested in concerning data vault. It can also be useful if you have the time for web research on the topic prior to class.

Registration and Fees

Please see www.GeneseeAcademy.com for Course Calendar, Registration and Pricing

This fee includes all materials and meals during the training.

Click here to [Register](#).

Contact Genesee Academy

For any other questions, please contact Genesee Academy

info@GeneseeAcademy.com

+1 303 526 0340 <http://twitter.com/geneseeacademy>

More Information on Data Vault



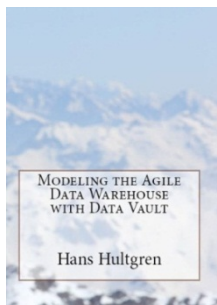
HansHultgren.WordPress.com



[Twitter.com/GeneseeAcademy](https://twitter.com/GeneseeAcademy)



[Linkedin.com/company/genesee-academy-llc](https://www.linkedin.com/company/genesee-academy-llc)



Book Available on Amazon:

“Modeling the Agile Data Warehouse with Data Vault”

DataVaultBook.BlogSpot.com

